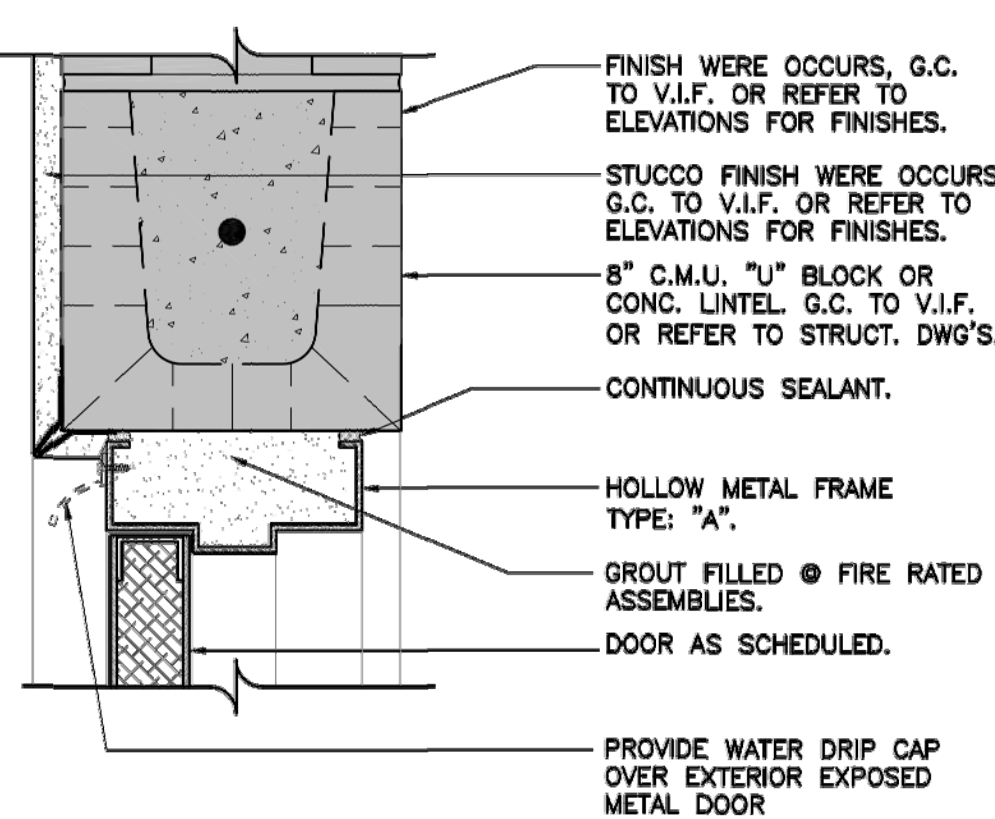
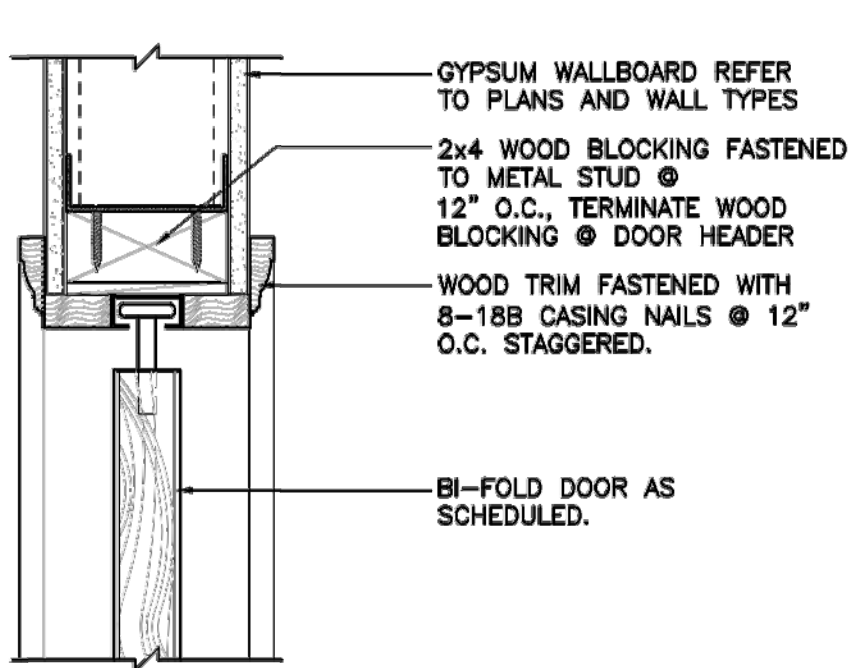


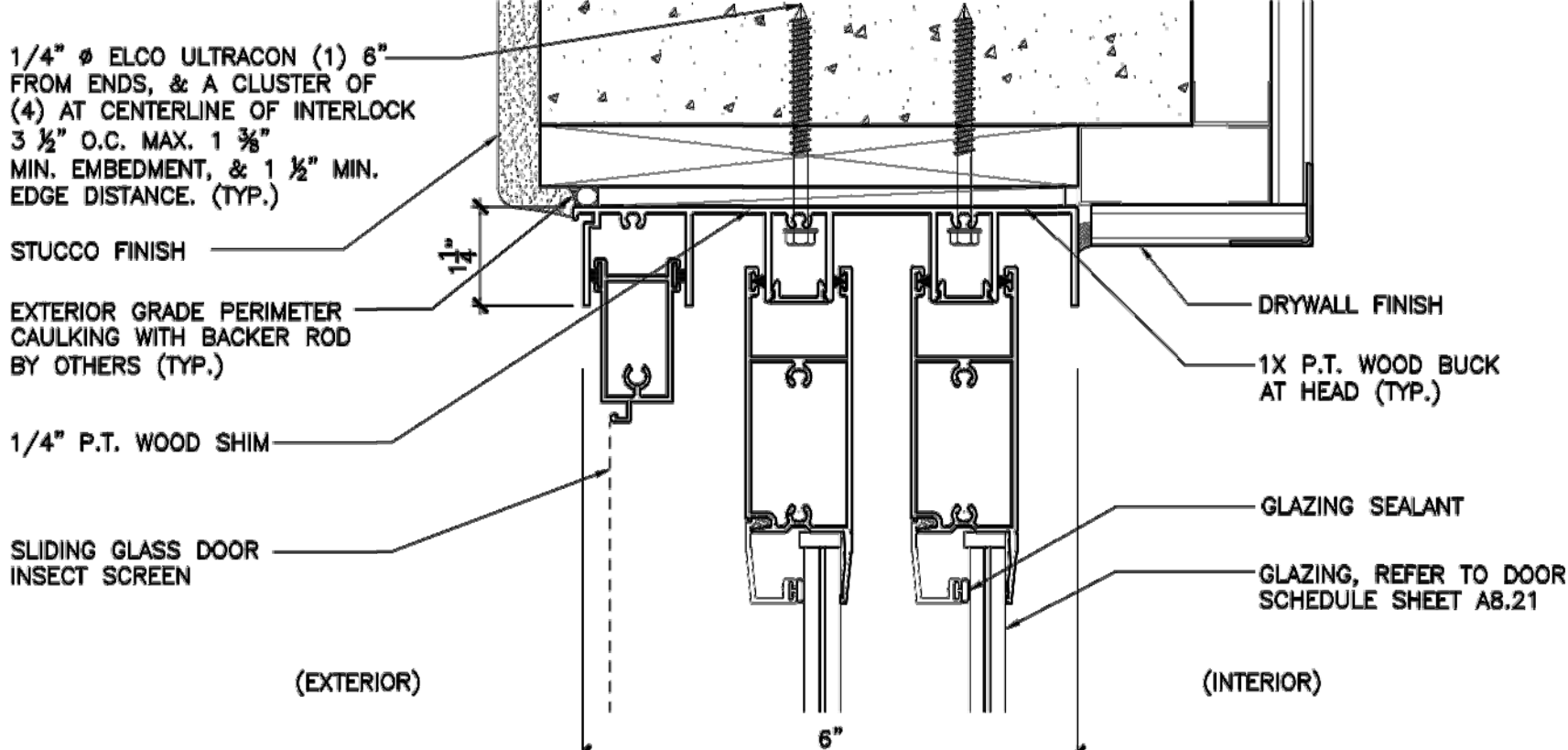
**01 Swing Door Head**  
SCALE: 3" = 1'-0"



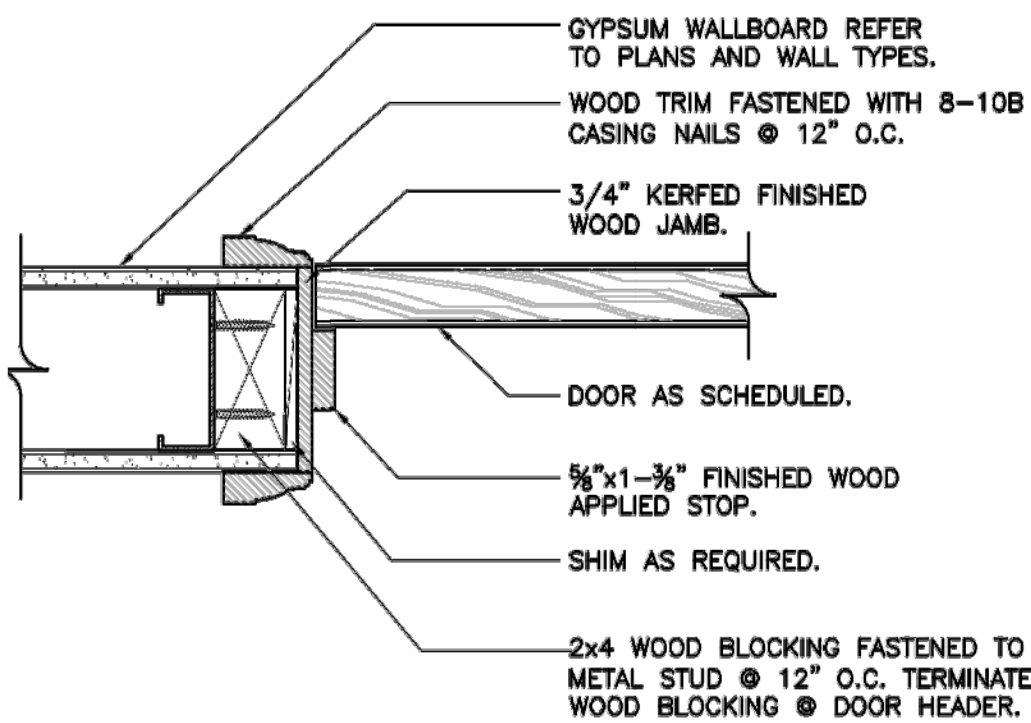
**02 Swing Door Head**  
SCALE: 3" = 1'-0"



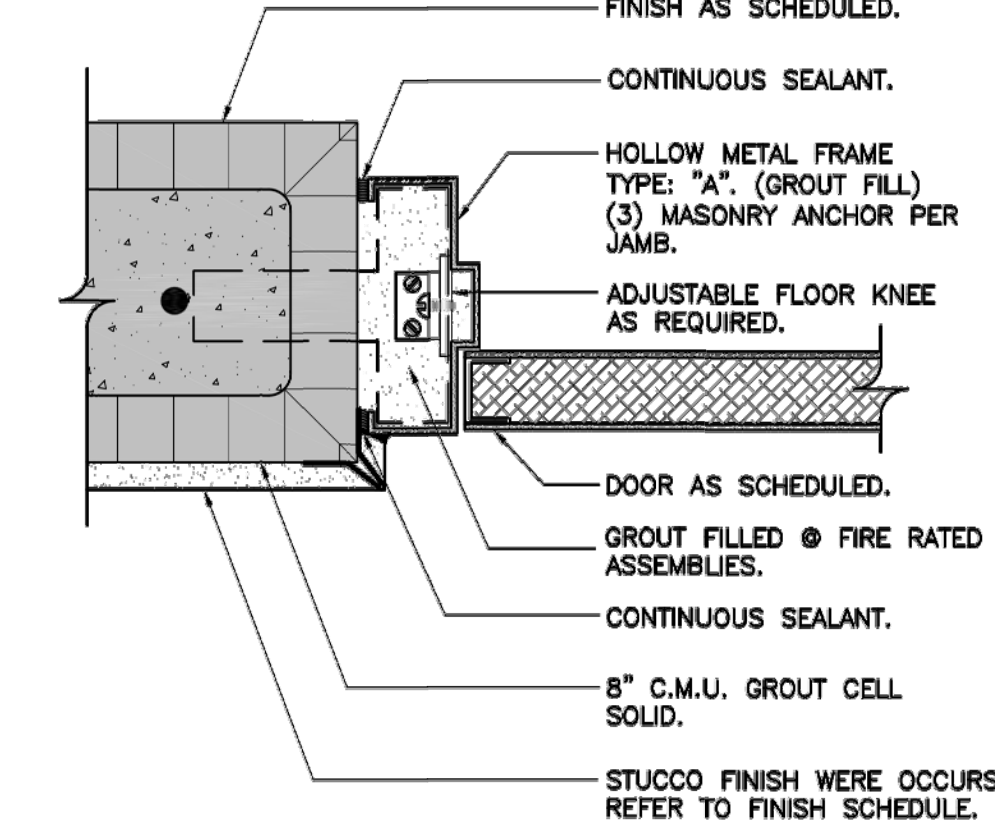
**03 Bi-Fold Head Detail**  
SCALE: 3" = 1'-0"



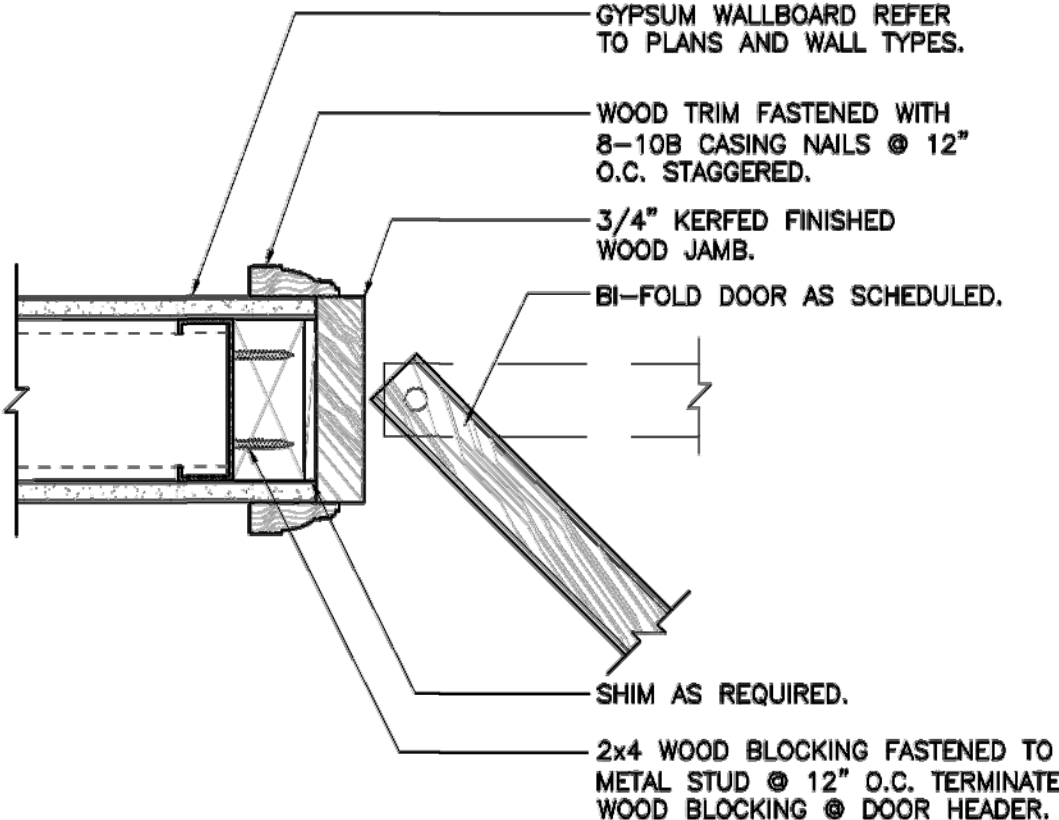
**05 Sliding Door Head**  
SCALE: 6" = 1'-0"



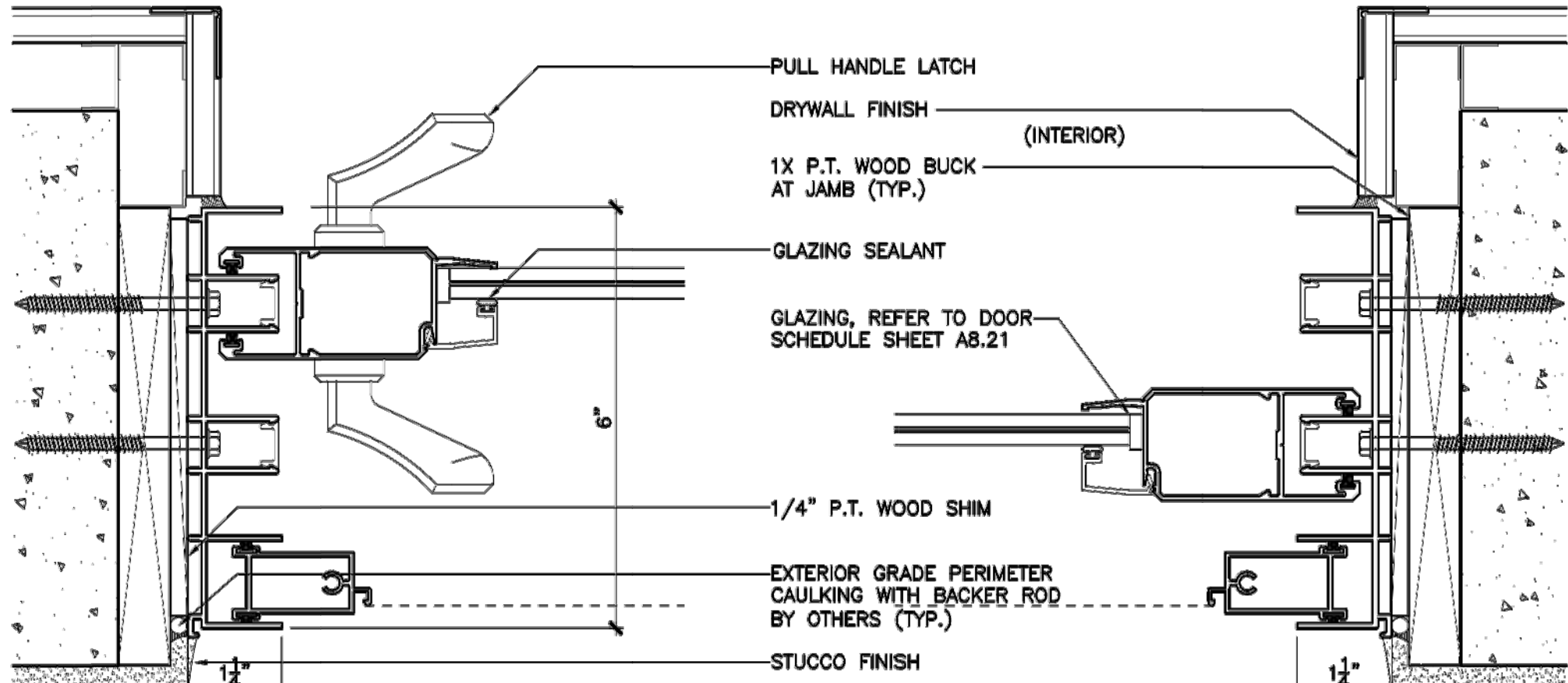
**06 Swing Door Jamb**  
SCALE: 3" = 1'-0"



**07 Swing Door Jamb**  
SCALE: 3" = 1'-0"

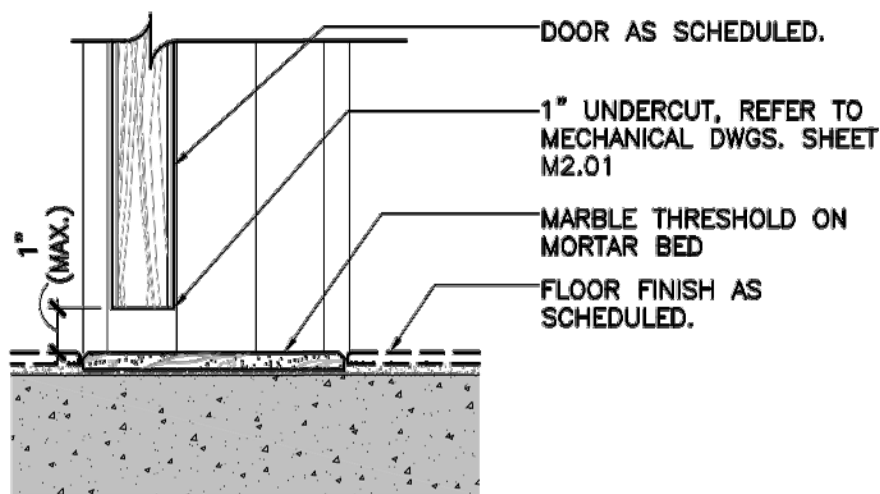


**08 Bi-Fold Jamb Detail**  
SCALE: 3" = 1'-0"

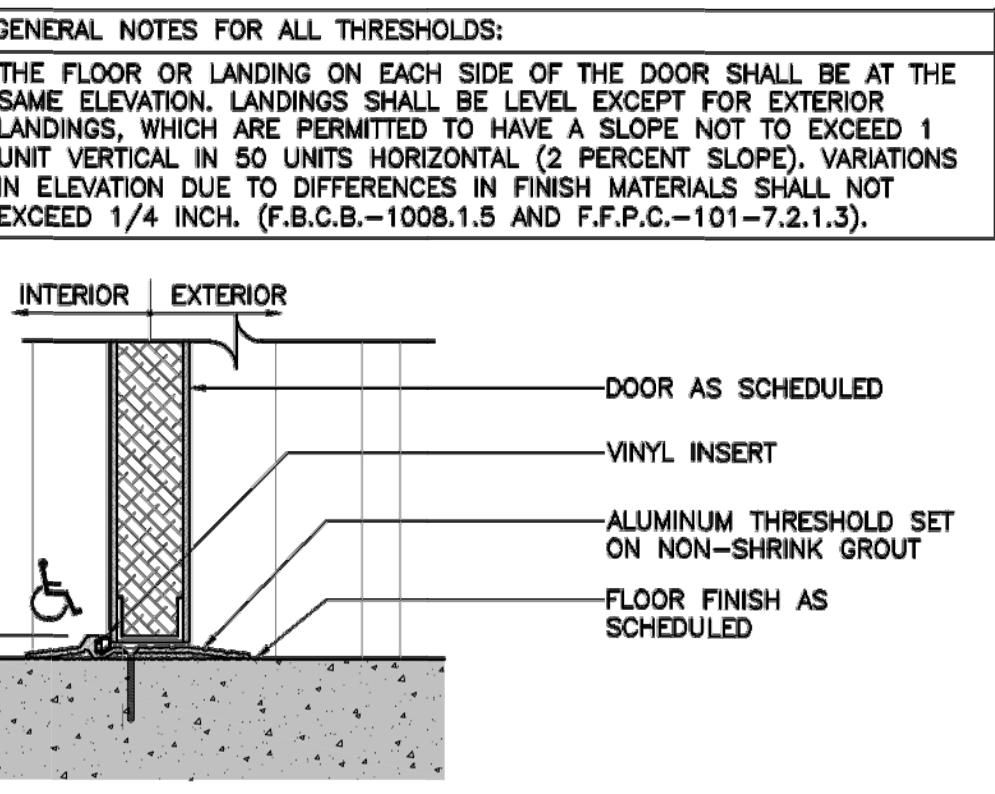


**10 Sliding Door Jamb**  
SCALE: 6" = 1'-0"

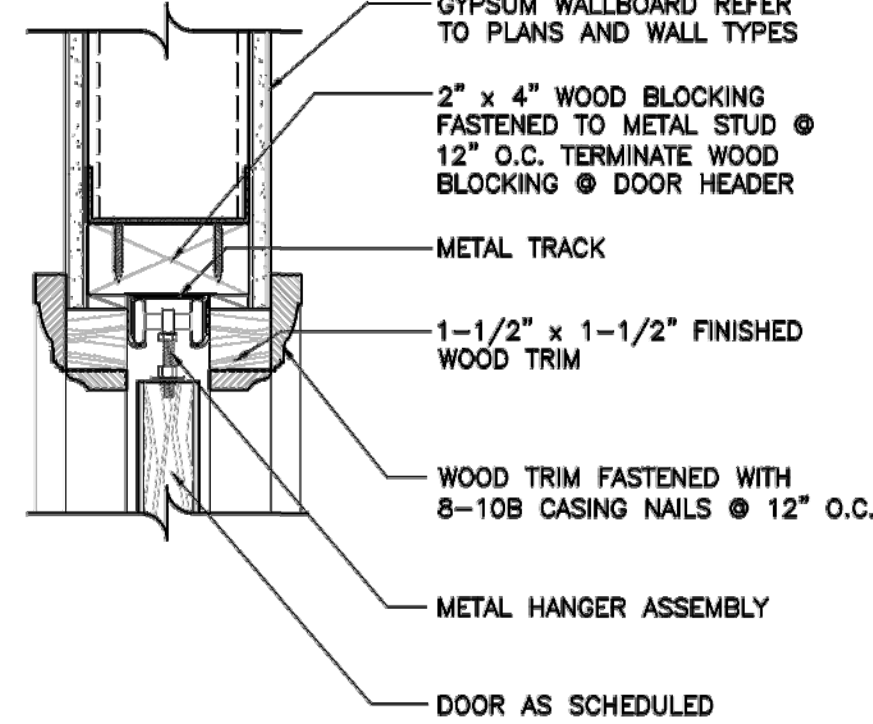
- GENERAL NOTES FOR ALL MARBLE THRESHOLDS:
- MARBLE THRESHOLDS ARE TO BE ONE PIECE FOR SINGLE SWING DOORS, PAIR SWING DOORS AND POCKET DOORS UNLESS OTHERWISE NOTED.
  - ALL EXPOSED EDGES ARE TO BE POLISHED UNLESS OTHERWISE NOTED.



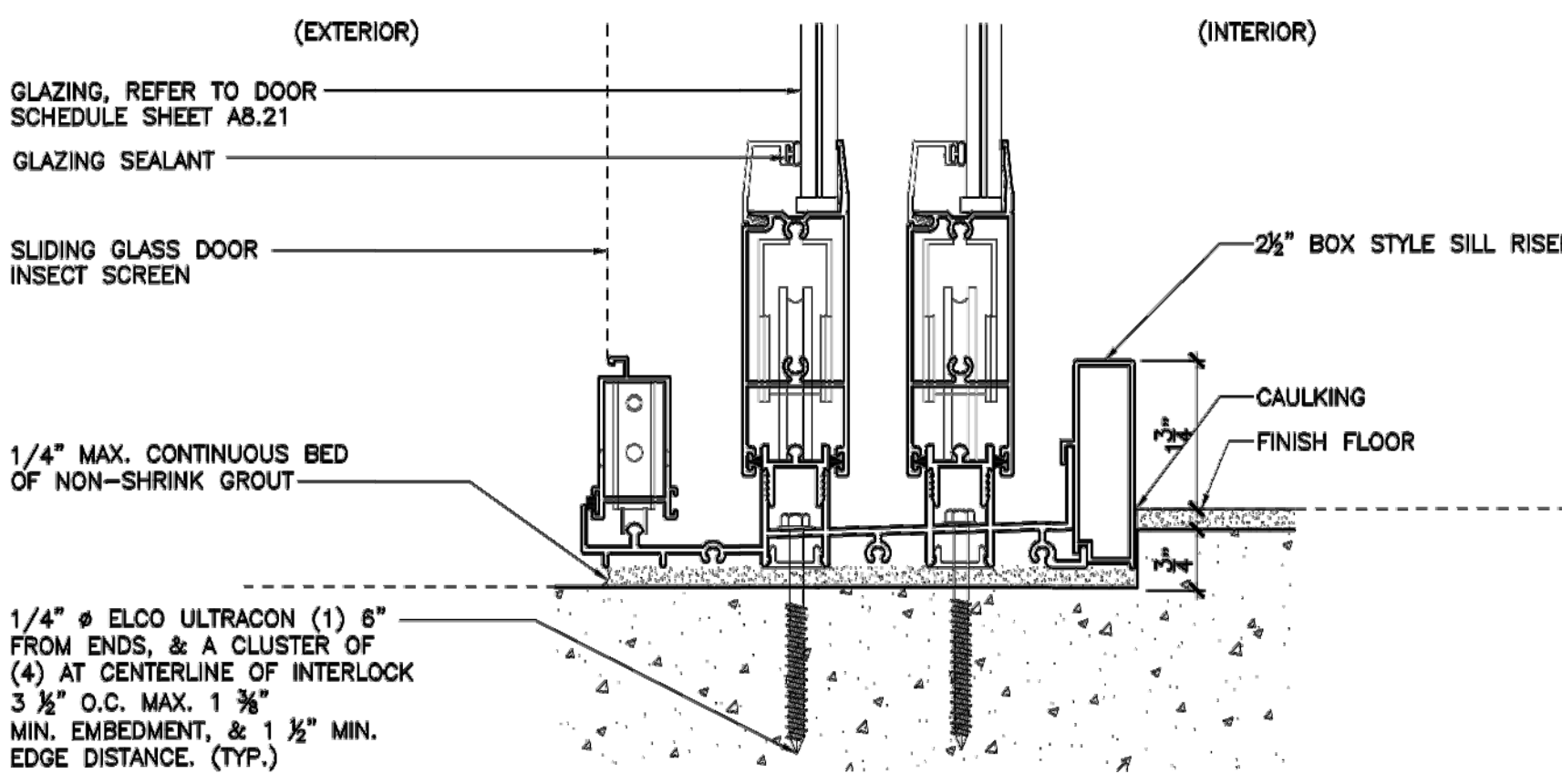
**11 Door Threshold**  
SCALE: 3" = 1'-0"



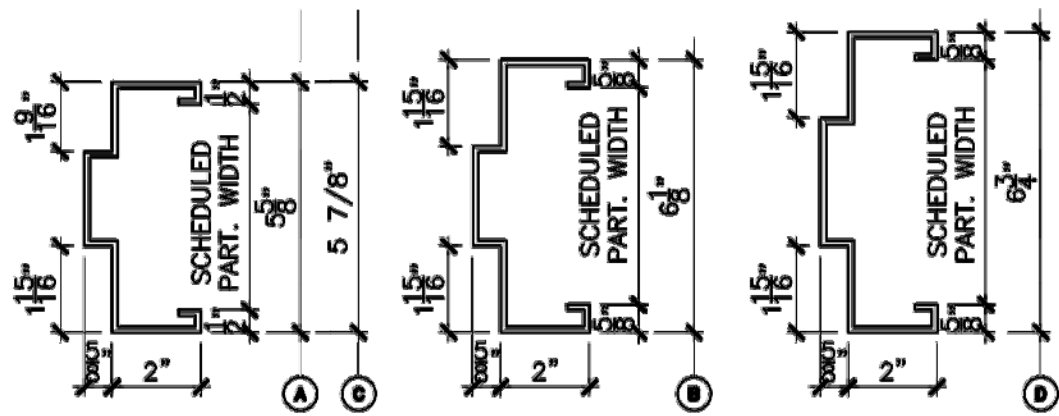
**12 Swing Door Threshold**  
SCALE: 3" = 1'-0"



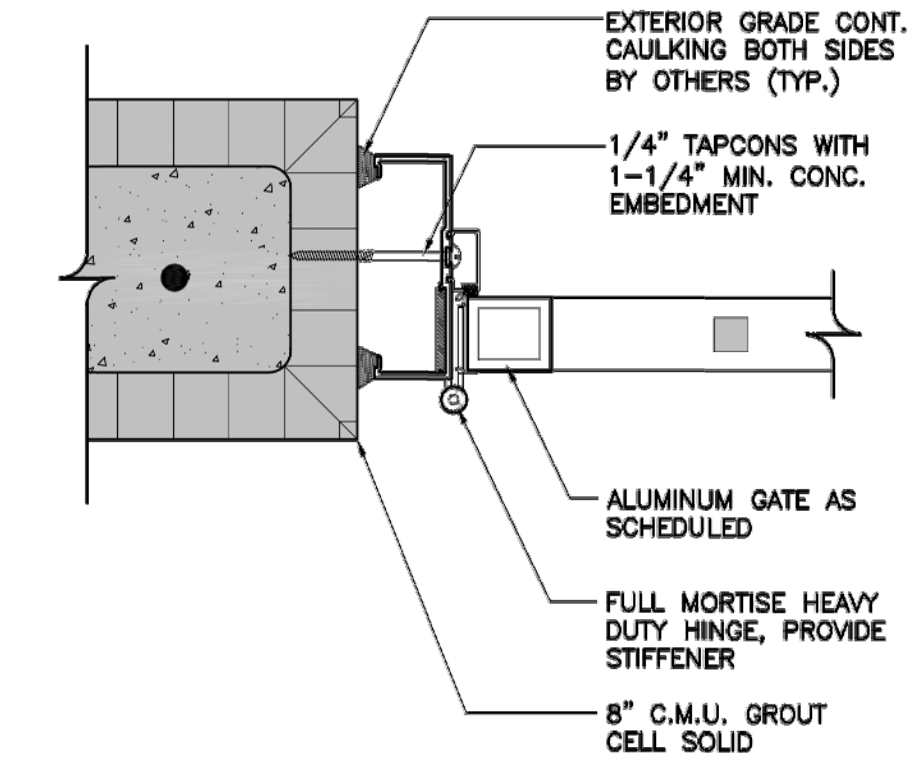
**13 Pocket Door Head**  
SCALE: 3" = 1'-0"



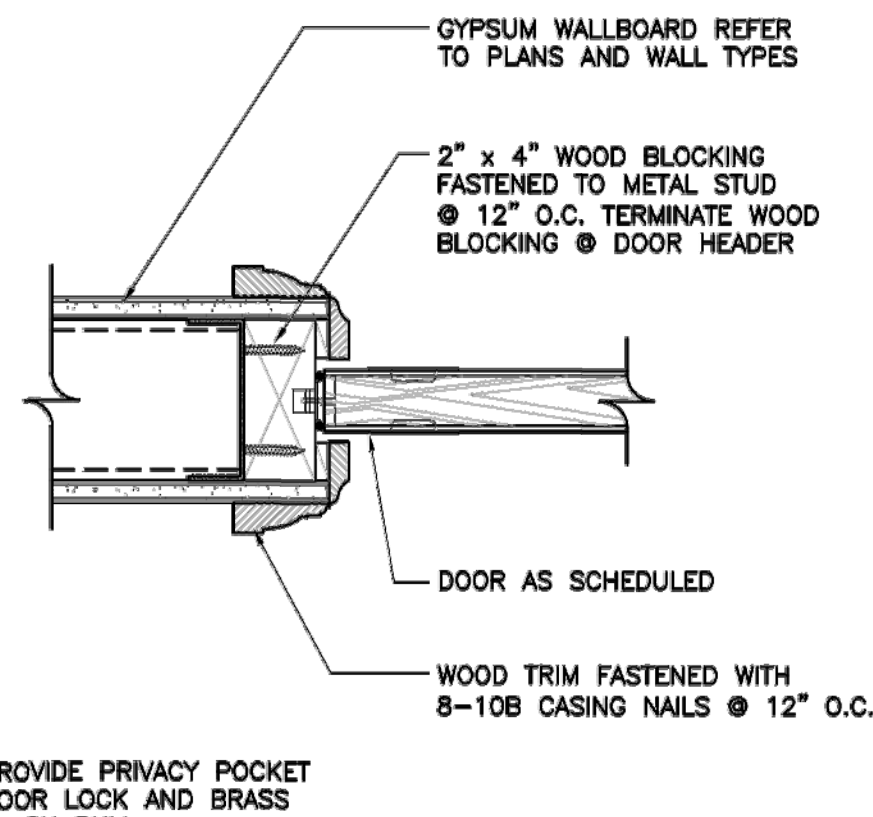
**15 Sliding Door Threshold**  
SCALE: 6" = 1'-0"



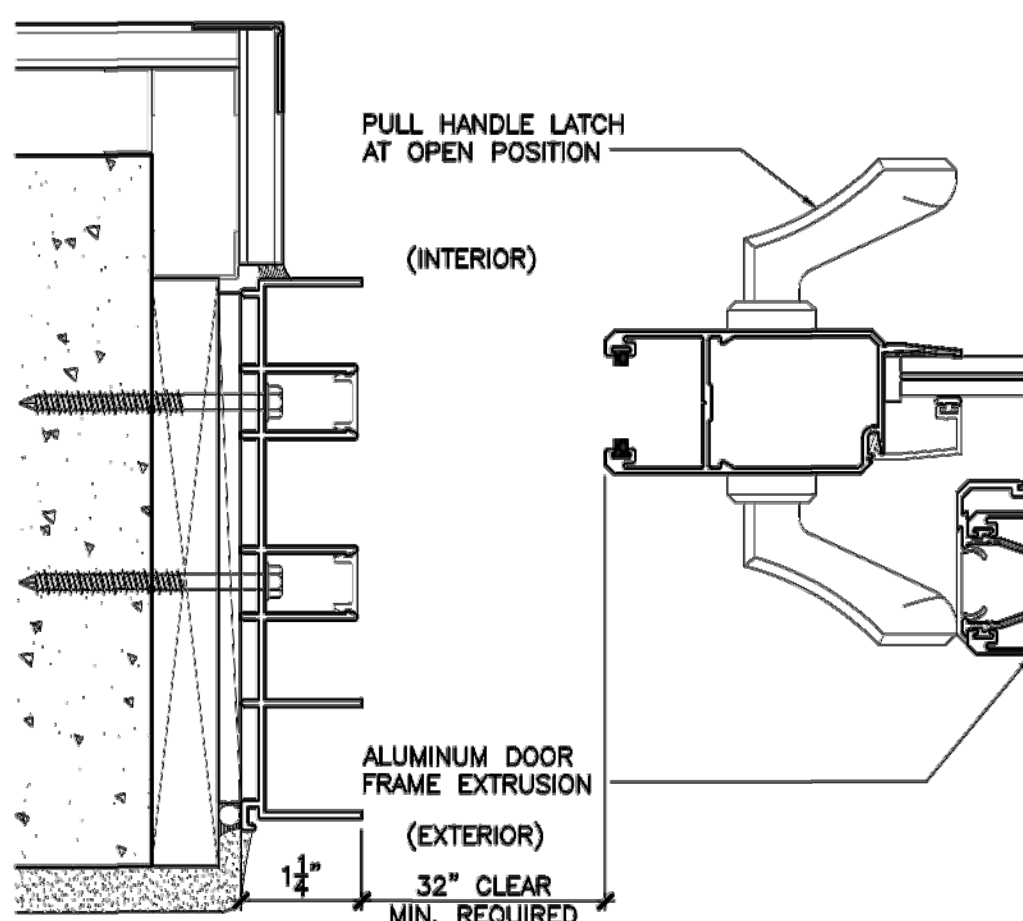
**16 Metal Door Frames**  
SCALE: 3" = 1'-0"



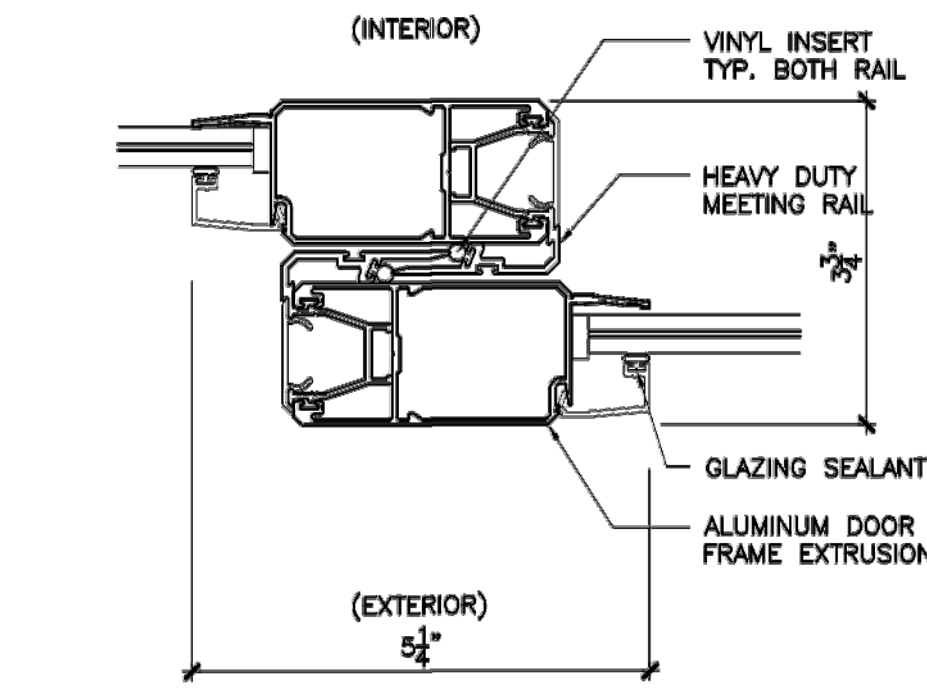
**17 Swing Gate Jamb**  
SCALE: 3" = 1'-0"



**18 Pocket Door Jamb**  
SCALE: 3" = 1'-0"



**19 Sliding Door Opening**  
SCALE: 6" = 1'-0"

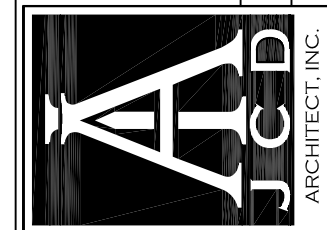


**20 Sliding Door Rail**  
SCALE: 6" = 1'-0"

| Revisions          |
|--------------------|
| 02.01.19 1ST ISSUE |
|                    |
|                    |
|                    |
|                    |
|                    |

PROPOSED NEW BLDG#4 (8 UNIT APT COMPLEX)  
THE VILLAGES AT MIAMI GARDENS  
3400 NW 191 ST.  
MIAMI GARDENS, FL. 33056-2936

JCD ARCHITECT, Inc.  
JUAN C. DAVID R.A. #0015344  
Design & Development  
LEED ACCREDITED PROFESSIONAL  
Architecture Interiors Planning Construction  
1385 Coral Way, Suite 404 Miami, Florida 33145 Phone: (305) 285-1343 Fax: (305) 955-4330



Job No.  
Date  
Scale SHOWN

Seal  
AA-26001560  
Sheet No.  
A-501

Designs are subject to modification or change as required by actual measurements, standard industry practices in light of existing structural and other conditions, applicable building codes, and the like. These plans are and shall remain the property of JCD Architect, Inc. and shall not be sold or reproduced without its prior written consent. JCD Architect, Inc. shall be notified of any changes required by actual measurements, etc. as stated prior to submission of any phase for bid or construction.