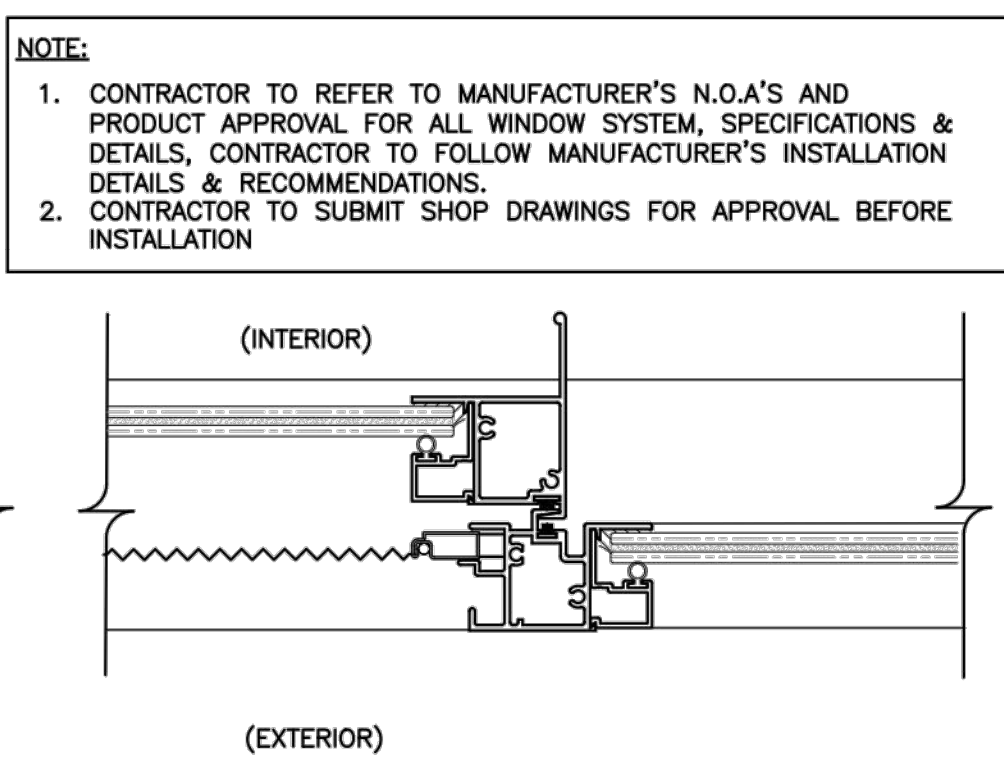
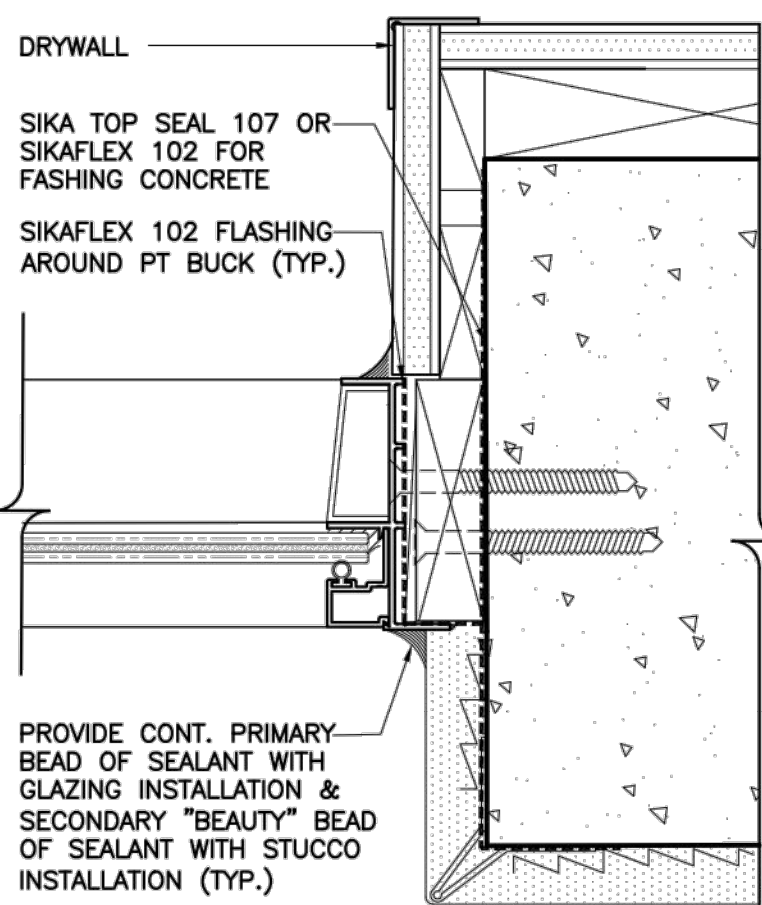


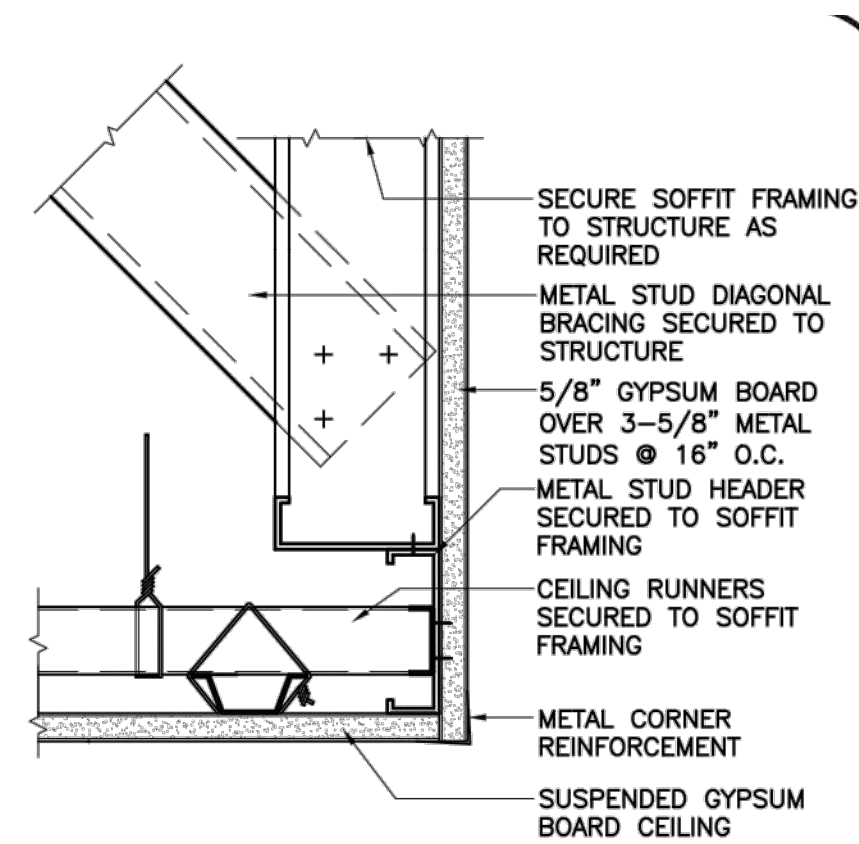
01 Horizontal Roller Jamb
SCALE: 6" = 1'-0"



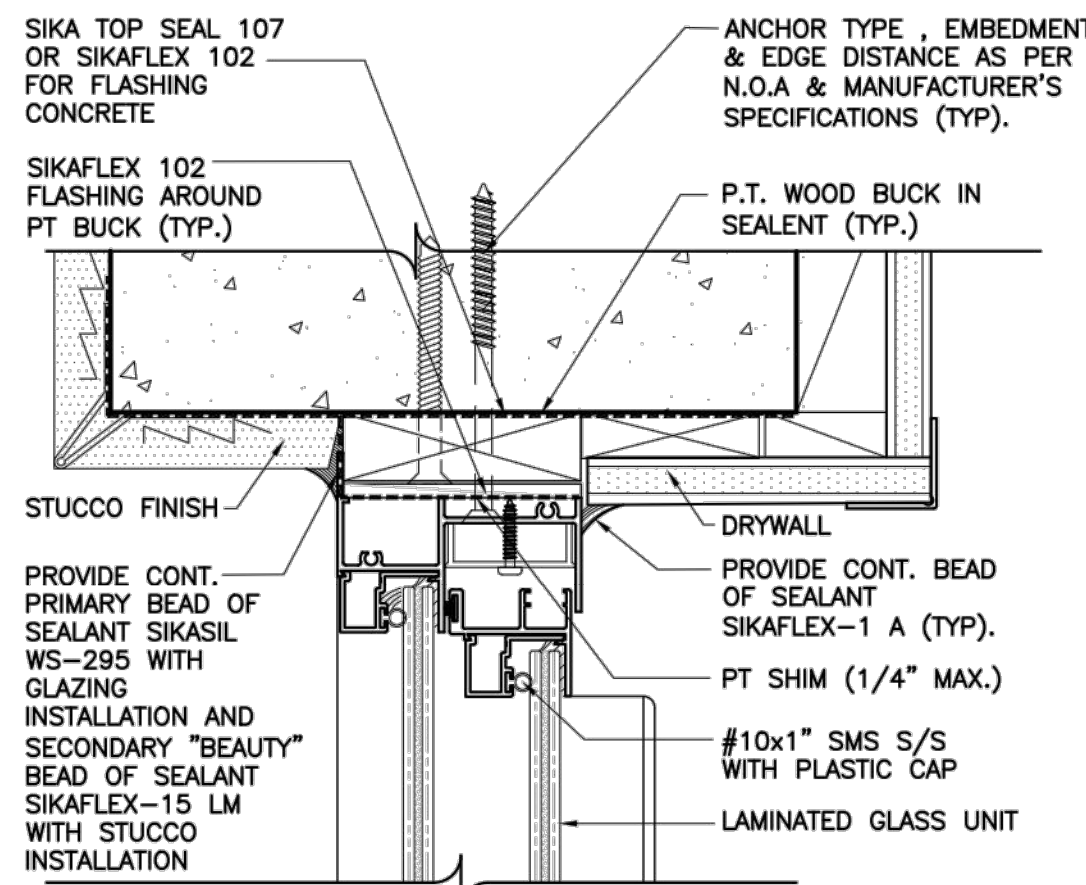
02 Intermediate Mullion
SCALE: 6" = 1'-0"



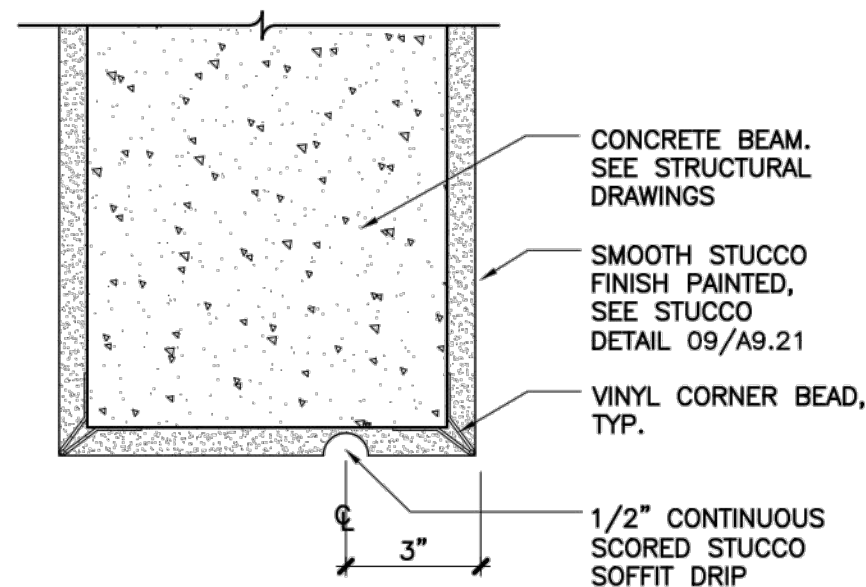
03 Horizontal Roller Jamb
SCALE: 6" = 1'-0"



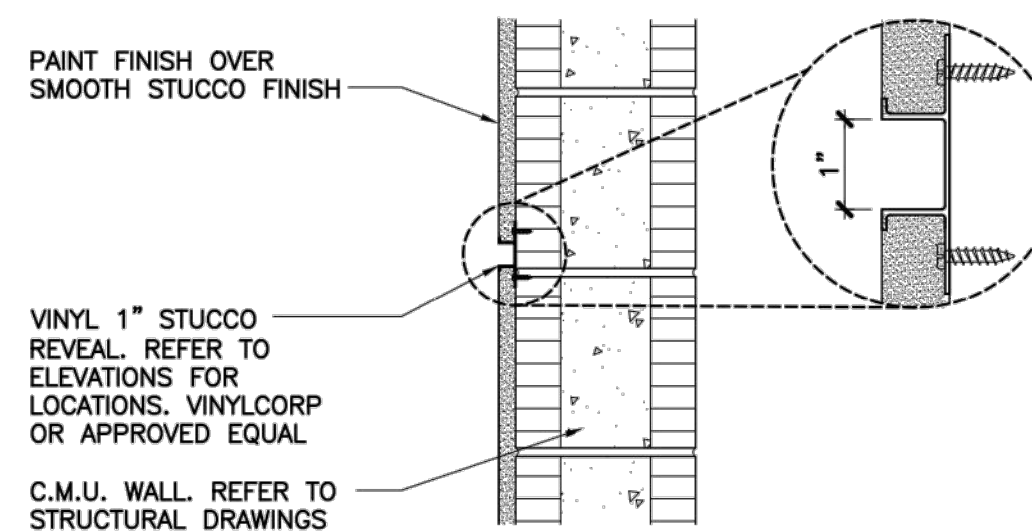
05 Bulkhead Detail
SCALE: 3" = 1'-0"



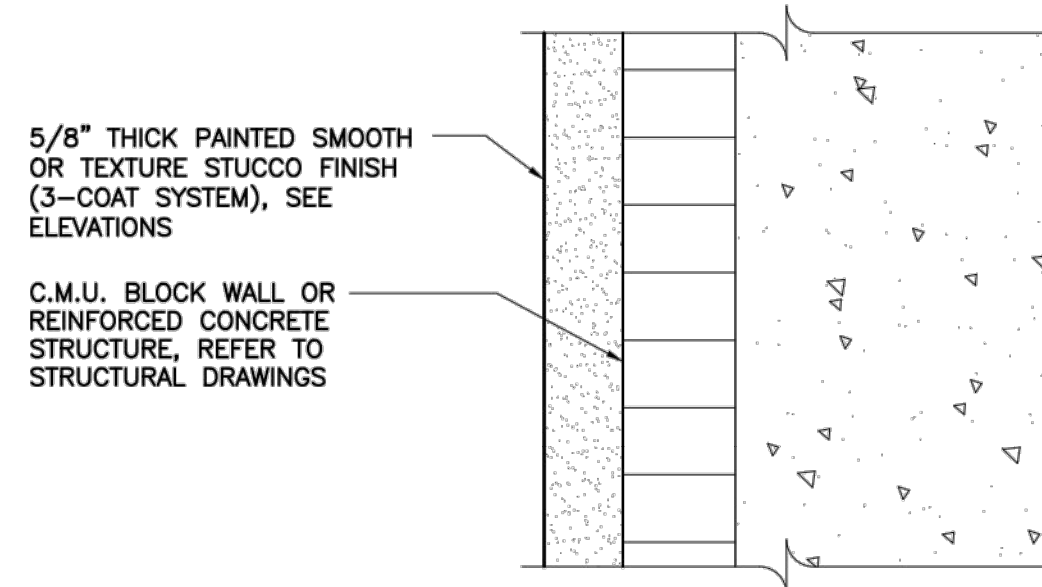
06 Horizontal Roller Head
SCALE: 6" = 1'-0"



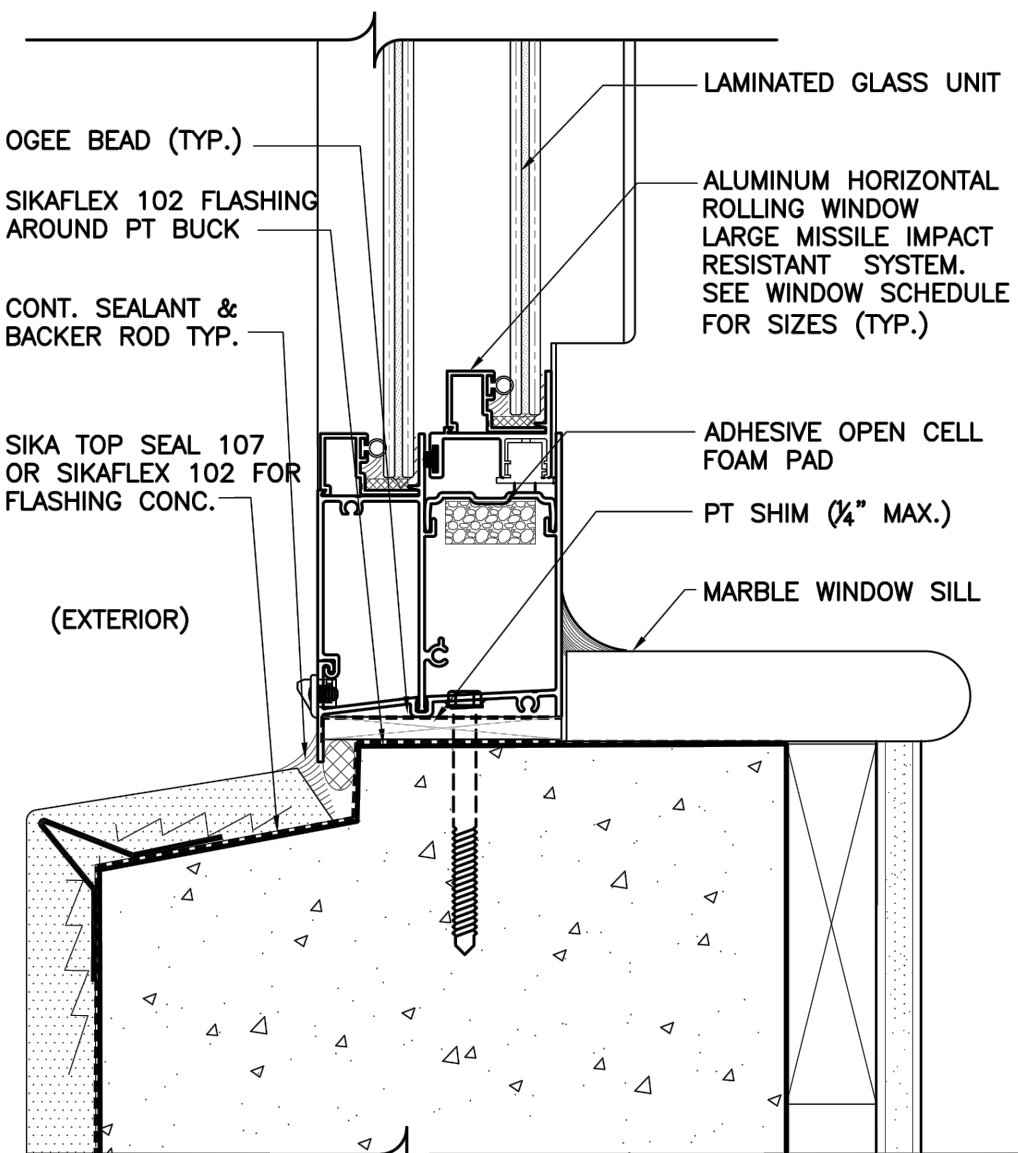
07 Drip Edge Detail
SCALE: 3" = 1'-0"



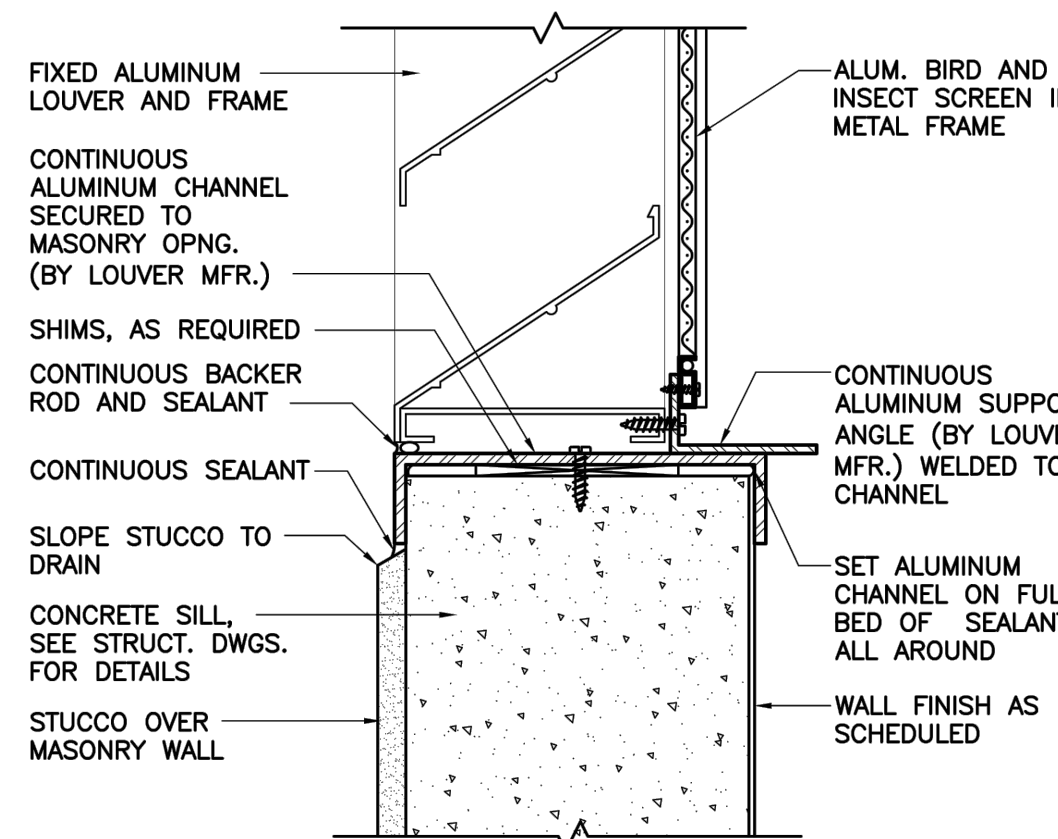
08 Typ. Reveal Detail
SCALE: 1 1/2" = 1'-0"



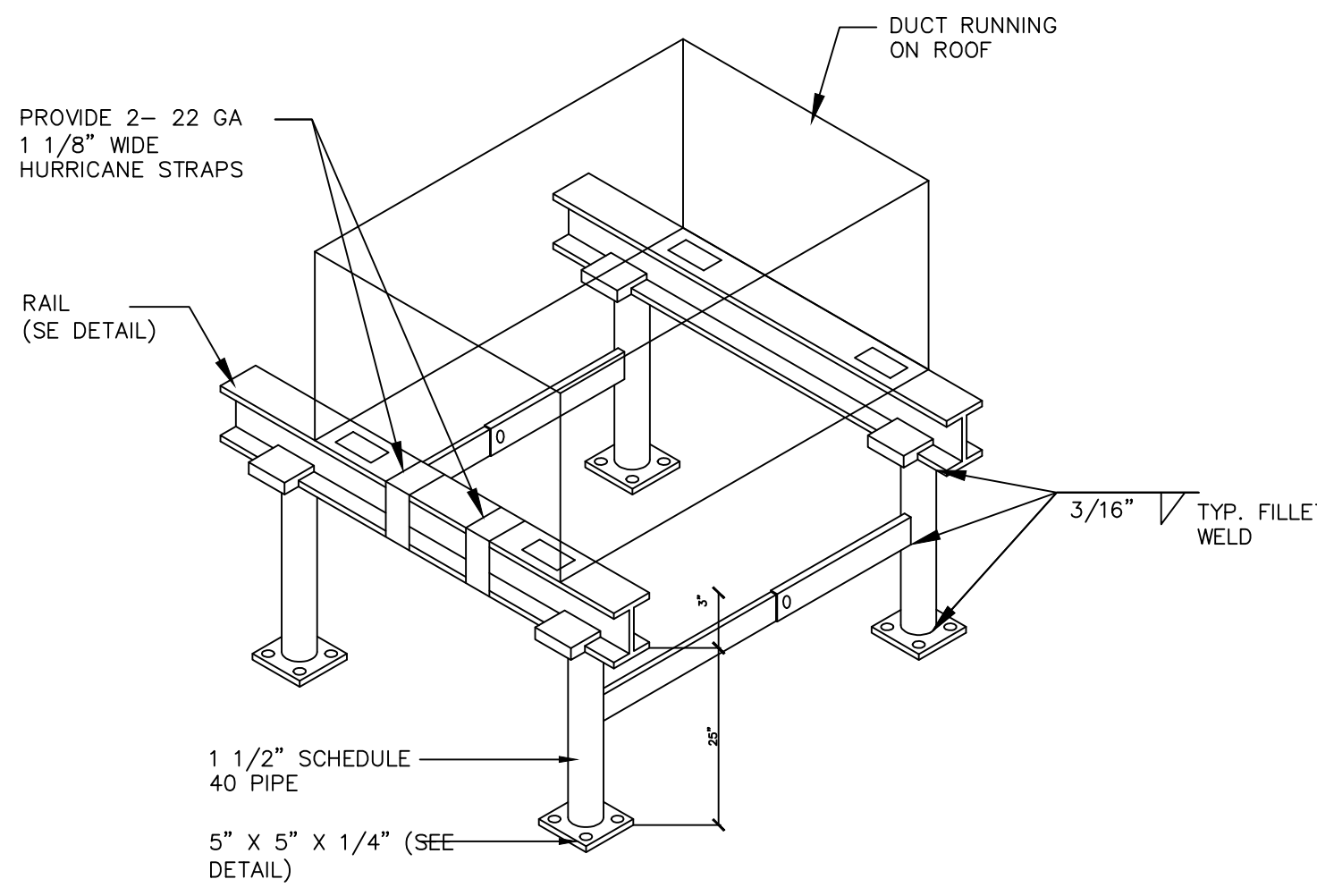
09 Stucco Detail
SCALE: 6" = 1'-0"



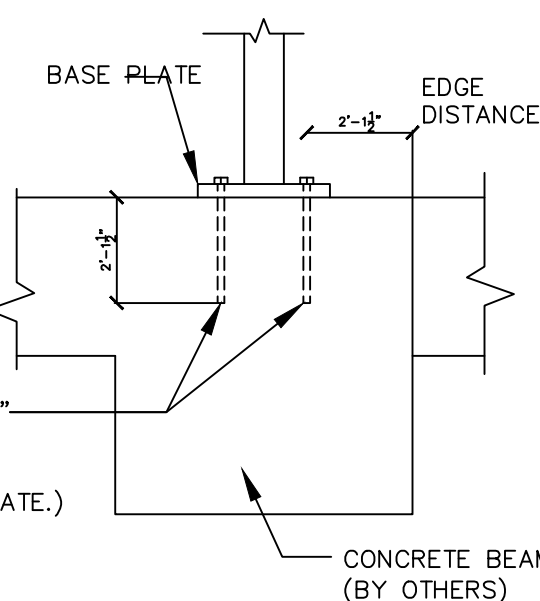
16 Horizontal Roller Sill
SCALE: 6" = 1'-0"



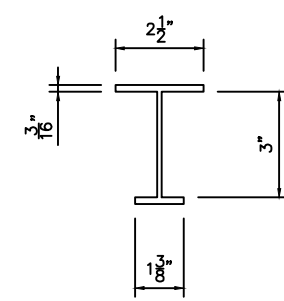
17 Louver Sill Detail
SCALE: 3" = 1'-0"



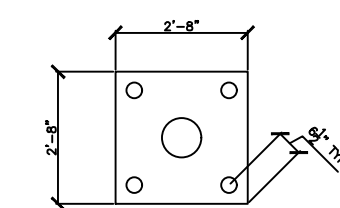
ISOMETRIC



TYP. CONNECTION TO CONCRETE



RAIL SECTION

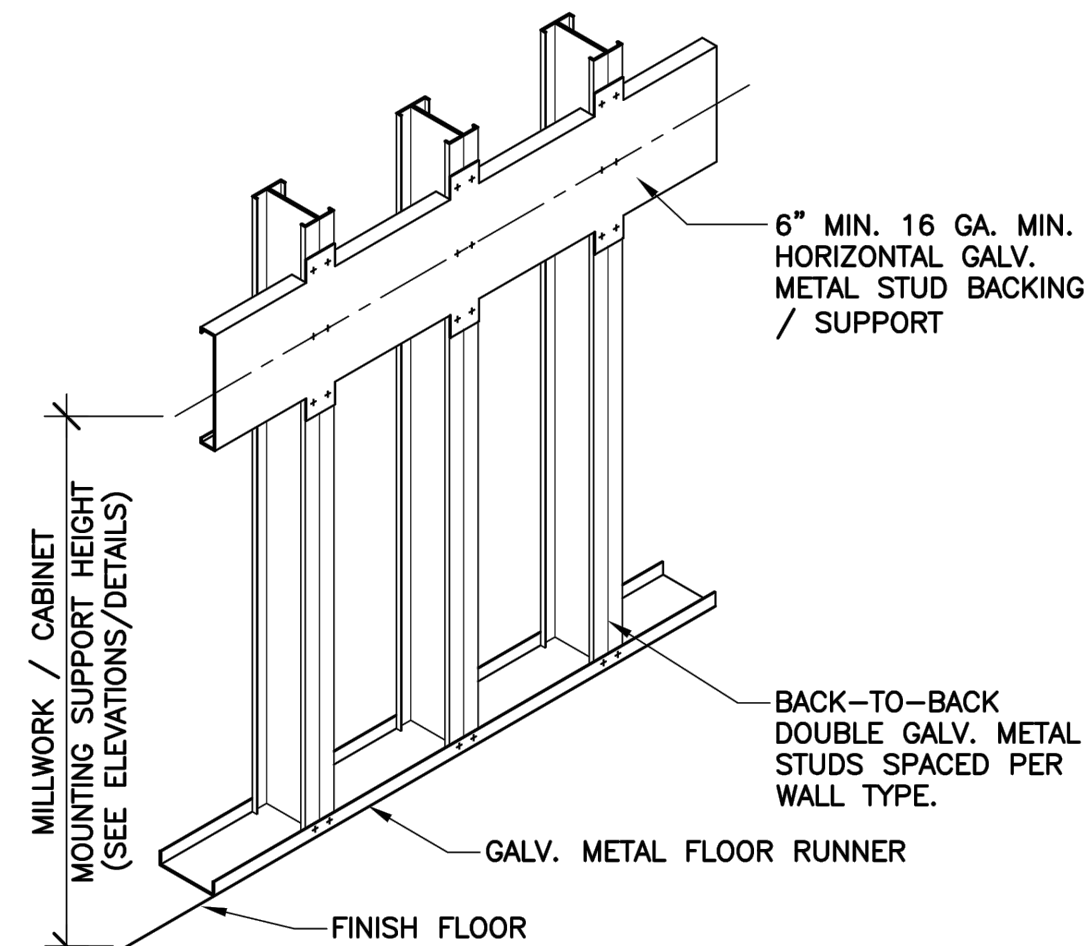


BASE PLATE DETAIL

- NOTES: (TO BE REVIEWED BY MECHANICAL AND STRUCTURE)
- MANUFACTURER'S SUBMITTALS SHALL INCLUDE WIND LOAD CALCULATIONS FOR RTU MOUNTING BASED ON NOA, WITH THE TE-DOWN INDICATING COMPLIANCE WITH FBC FIFTH EDITION WIND LOADS. SEE NOTE (2).
 - PROVIDE MFR. PROOF OF CONSTRUCTION TO RESIST WIND VELOCITIES PER NEW CODE, 3 SECOND WIND GUSTS AT A MAX. OF 175 MPH, ELEV. OF 33 FT. A.G.
 - ALL FRAME STEEL SHALL BE SHOP PRIMED WITH RED LEAD AND FIELD PAINTED WITH A RUST INHIBITIVE PRIMER.
 - MECHANICAL FIELD INSPECTOR WILL COLLECT WIND LOAD CALCULATIONS FROM A/C EQUIPMENT MANUFACTURER (WITH RAISED ENGINEER'S SEAL) IN COMPLIANCE WITH F.M.C. 301.15.
 - WEIGHT OF PROPOSED RTU#1=349 Lbs, RTU#2=333 Lbs, RTU#3=304 Lbs.
 - MODIFICATIONS TO EXISTING ROOF STRUCTURE DUE TO ADDITIONAL FORCES APPLIED BY NEW MECHANICAL UNIT TO BE PROVIDED BY CONTRACTOR AND HIS SPECIALTY ENGINEER WITH CORRESPONDING SIGNED AND SEALED SHOP DRAWINGS. THIS SHALL BE SUBMITTED AS SEPARATE PERMIT THRU SHOP DRAWING REVIEW PROCESS.
 - SHOP DRAWINGS WILL BE SUBMITTED BY SPECIALTY ENGINEER TO AUTHORITY HAVING JURISDICTION (STRUCTURAL) FOR REVIEW AND APPROVAL PRIOR COMMENCING WORK.

NOTE: ALUMINUM BASE AS FABRICATED BY F&L ALUMINUM PARTS, INC. WITH NOA No. 15-0205.01
EXP. DATE: MAY 15, 2019.

typical backing support detail :



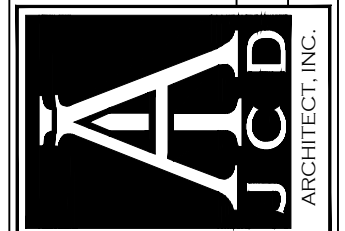
wall type general notes :

- GYPSUM WALLBOARD AND FRAMING SYSTEMS SHALL BE INSTALLED IN ACCORDANCE WITH RECOMMENDATIONS OF:
 - ASTM C754 - INSTALLATION OF STEEL FRAMING MEMBERS TO RECEIVE SCREW ATTACHED GYPSUM WALLBOARD, BACKING BOARD OR WATER RESISTANT BACKING BOARD.
 - GA-216 - RECOMMENDED SPECIFICATIONS FOR THE APPLICATION, INSTALLATION AND FINISHING OF GYPSUM BOARD.
- PROVIDE BACK-TO-BACK DOUBLE METAL STUDS FOR ANY CABINET SUPPORT. PROVIDE HEAVY GAUGE GALV. METAL STUD HORIZONTAL BACKING SECURED TO VERTICAL STUD WITH MIN. OF 2 SCREWS PER STUD. F.B.C. 2517.5.1.3.
- ALL INTERIOR WALLS AND PARTITIONS SHALL BE IN COMPLIANCE WITH F.B.C. 1618.8. PERMANENT, FULL-HEIGHT INTERIOR WALLS AND PARTITIONS SHALL BE DESIGNED TO RESIST A LATERAL LIVE LOAD NOT LESS THAN 5 PSF (239 PA).
- BRACING PER MANUFACTURER'S STUD LIMITING HEIGHT CHART RECOMMENDATIONS.
- RECOMMENDED GALV. METAL FRAMING MANUFACTURER SHOULD INCLUDE DIETRICH AND MARINO/WARE.
- ALL INSULATION MATERIALS SHALL HAVE A FLAME SPREAD INDEX OF NOT MORE THAN 25 AND SMOKE-DEVELOPED INDEX OF NOT MORE THAN 450 (F.B.C. 720.2).
- THIS PROJECT IS DESIGNED TO COMPLY WITH THE REQUIRED 25 DECIBEL LEVEL REDUCTION IN UNITS PURSUANT TO CONDITION #5 OF DECLARATION OF RESTRICTIONS.
- WALLS BETWEEN DWELLING UNITS AND BETWEEN DWELLING UNITS AND PUBLIC SPACES SHALL MEET THE REQUIRED STC-50 MINIMUM (FBC 2014 BUILDING SECTION 1207.2).

Revisions
02.01.19 1ST ISSUE

PROPOSED NEW BLDG # 6 (7 UNITS)
THE VILLAGES AT MIAMI GARDENS
3400 NW 191 ST.
MIAMI GARDENS, FL 33066-2936

JCD ARCHITECT, Inc.
JUAN C. DAVID R.A. #0015344
Design & Development
LEED ACCREDITED PROFESSIONAL
Architecture Interiors Planning Construction
1385 Coral Way, Suite 404 Miami, Florida 33145 Phone: (305) 285-4343 Fax: (305) 285-4330



Job No.
Date
Scale SHOWN

Seal
AA-26001560
Sheet No.
A-502