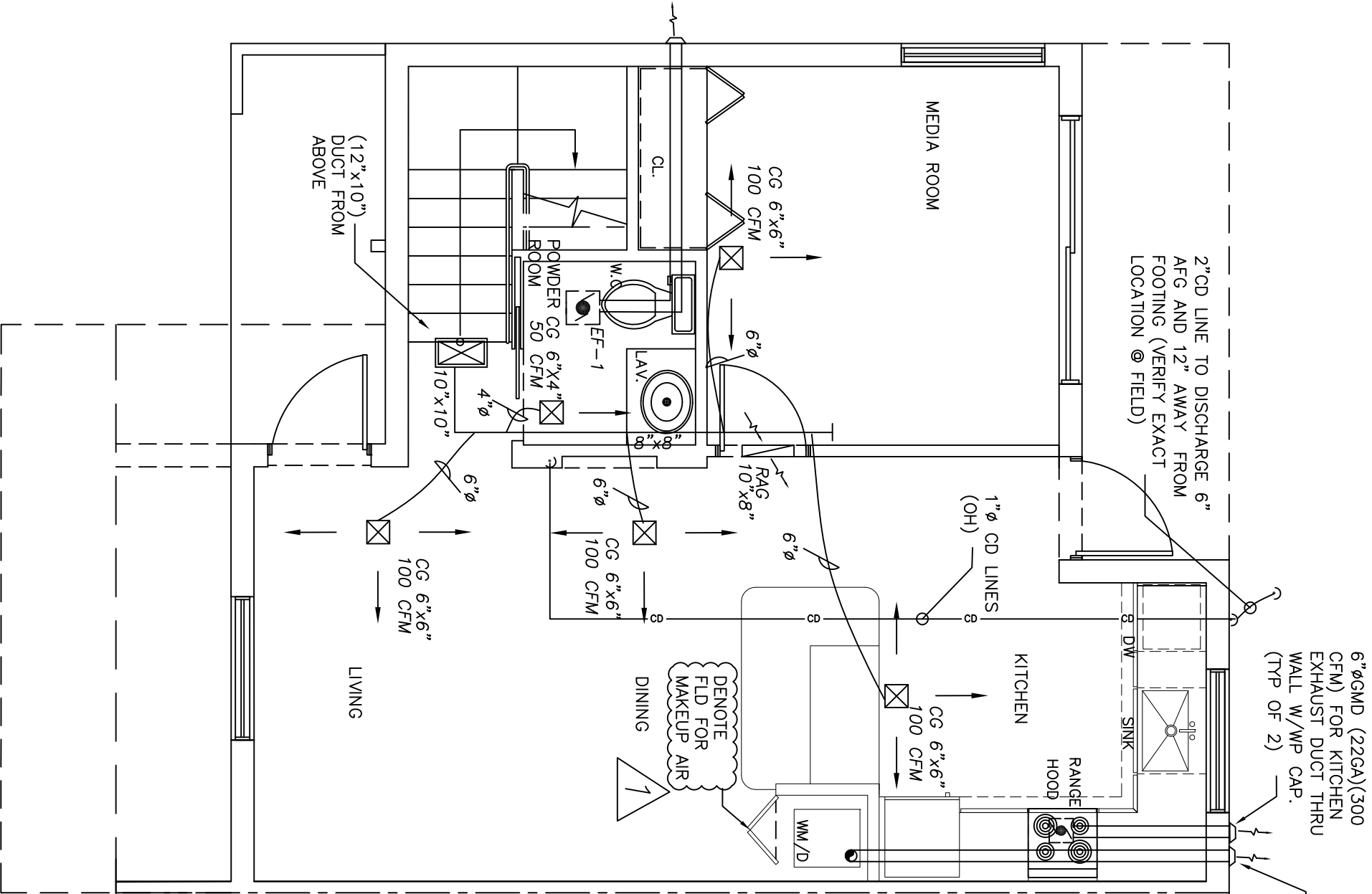
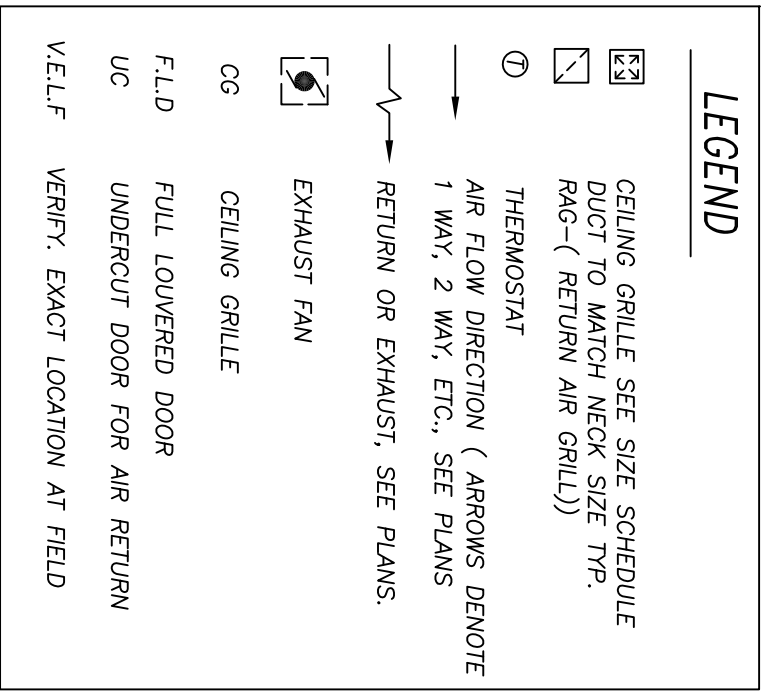


1. Contractor shall furnish all labor, materials and equipments for a complete HVAC system in accordance with these drawings following guidelines:
 - a. (1) Cooling coils (207) and the latest edition of ASHRAE (2) Slushbox (3) evaporative Refrigeration (b) North Pamphlets 504 & 91
2. Provide all air conditioning equipment to be 1-1/2" standard duty coil reinforced fiberglass (7-6) manufactured and gage printed on the vapor barrier when unenclosed space, and on 3/4" standard duty vapor barrier in conditioned space or return plenum space.
3. Provide all exhaust ductwork to be cold gage galvanized sheet metal.
4. Confirm duct size shows are met and free zone inside.
5. Provide all air services (diffusers, registers and grilles) to be all aluminum construction with exposed metal chemically treated to accept paint to match color of the grille or approved equal.
6. Provide opposed blade dampers at all diffusers and registers.
7. Provide thermostats to be combination control / heating with system cool / auto / heat / on and fan / on / off with static switches. Installation shall be per section 1.7 "in line" switches.
8. Provide all ductwork to be 1 1/2 diameter.
9. Provide new filters for fan coil before starting. These filters must also be replaced prior to final acceptance by owner.
10. General contractor is to hire an independent Test and Balance company which shall provide 3 sets of the report and sealed off by the Professional Engineer from the company prior of acceptance of the work.
11. Materials to be required:
 - a. (1) Provide turning vanes at all change of direction and provide in accordance with the applicable regulations.

[illegible]

FAN-COIL																
DESIGNATION	CM	MECH		ENTERING F		ELECTRICAL DATA						REF	OBS			
		TOTAL	SENSIBLE	WB	DB	VOIS	PHASES	HING	WV	WIRE	FUSES		MAIN/FAC.	UNIT	LD.	SUC.
AH-1(2.5T)	1000	30.0	22.5	67	80	240	1	5	23	30	TRANE	TEMAOC36H915	3/8	7/8	1	
AH-2(3T)	1200	36.4	27.1	67	80	240	1	7.5	32	40	TRANE	TEMAOC42SH158	3/8	3/4	1	

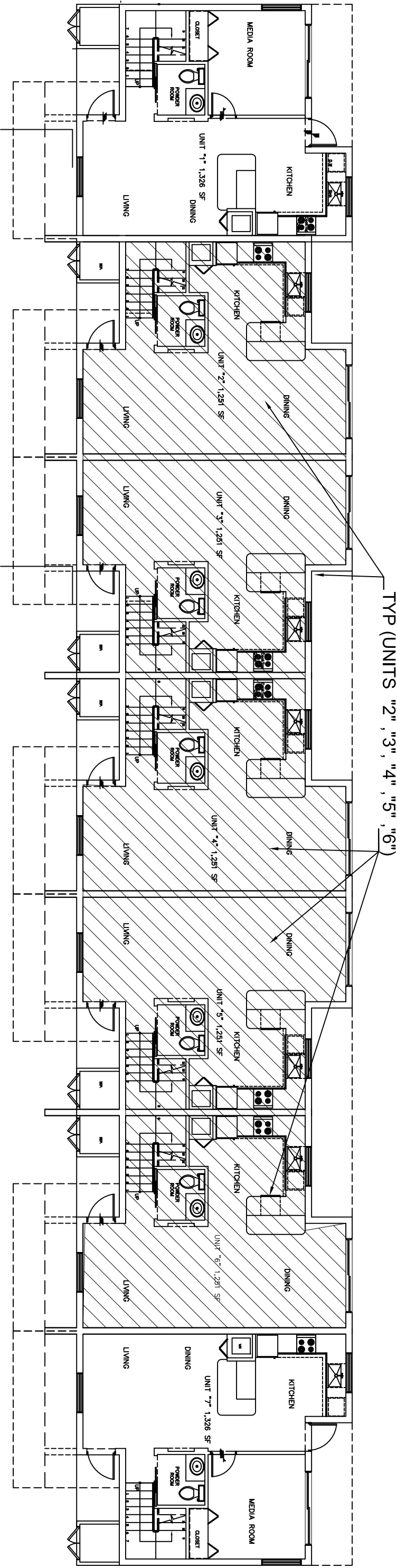
CONDENSING UNIT									
DESIGNATION	TEMP. ENT. CONDENSER	ELECTRICAL DATA				MANUFAC.	REF. UNIT	OBS. OR SEER	AREA SERVED
		VOLTS	PHASES	WIRE AMPS	FUSES				
CU-1(2-27)	30.0	95	1	25	30	TRANE	41T766030/1000A	17.0	SHOWN
CU-2(37)	36.4	95	1	25	30	TRANE	41T76036/1000A	17.0	SHOWN



The drawing is a detailed mechanical layout for a two-story residence. It shows the placement of HVAC equipment and the distribution of air through ductwork. Key features include:

- Rooms and Layout:** The plan shows Bedroom 3, Bedroom 2, a Master Bedroom, two Bathrooms, a Kitchen, and a Living Area. A Balcony is attached to the Master Bedroom.
- HVAC Equipment:**
 - Furnaces:** Two gas furnaces (CG 8"x8") are shown, one in Bedroom 3 and one in Bedroom 2, both rated at 150 CFM.
 - Air Handler:** An air handler (AHU#2, 3 TON) is located in the central hallway area.
 - Outdoor Units:** Two outdoor condensing units (OD 12"x12") are shown, one for each furnace.
- Ductwork:**
 - Supply Ducts:** Indicated by solid lines with arrows, showing air flow from the furnaces into the rooms.
 - Return Ducts:** Indicated by dashed lines with arrows, showing air flow from the rooms back to the air handler.
 - Registers:** Various registers are marked with 'R' and dimensions (e.g., 10"x8", 12"x10", 12"x12").
- Other Details:**
 - Refrigeration Lines:** Labeled 'REF. LINES (OH)' and 'REF. LINES (THRU COIL)', indicating the path for a refrigeration system.
 - Plumbing:** Labels for 'L.V.' (lavatory) and 'TUB' are present.
 - Dimensions:** Numerous dimensions are provided for duct runs and room clearances.

PROPOSED NEW BLDG #6 (7 UNITS)
 THE VILLAGES AT MIAMI GARDENS
 3400 NW 191st STREET
 MIAMI GARDENS, FL. 33056-2936



2' CD LINE TO DISCHARGE 6" AFG AND 12" AWAY FROM FOOTING (VERIFY EXACT LOCATION @ FIELD)

1' 6" CD LINES (RH)

DINING

CC 8" x 8" 150 CFM

7' 6"

6" 3"

KITCHEN

CC 8" x 6" 100 CFM

DENOTE MAKEUP AIR

REF.

RANGE HOOD

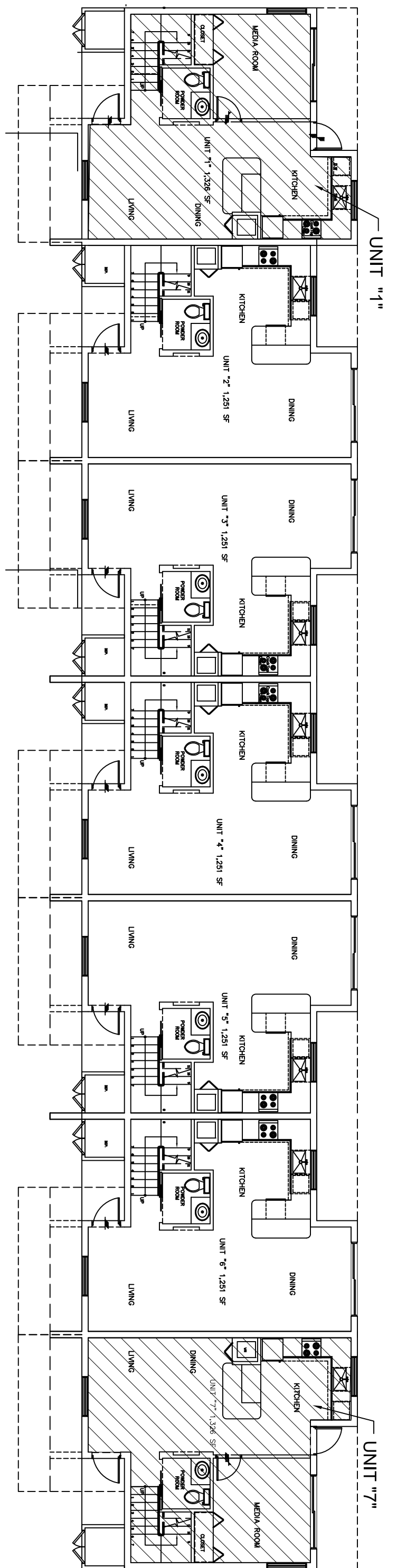
DW SINK

4 1/2" GND/26CA THRU W/SCREEN & B.D.O. (TYP OF 5)

6" GND (22CA/300 CFM) FOR KITCHEN DRAIN & 1/2" CD (TYP OF 4)

Architectural floor plan of the second floor. The plan shows two bedrooms, a bathroom, and a kitchen area. Key features include:

- BEDROOM 2:** Located at the top left, measuring 12.5' 0" x 6" 8". It contains a bed, a closet (CL.), and a window (W.C.).
- BEDROOM 3:** Located at the top right, measuring 12.5' 0" x 6" 8". It contains a bed, a closet (CL.), and a window (W.C.).
- BATH:** Located in the center, measuring 4' 0" x 5' 0". It contains a bathtub (TUB) and a toilet.
- KITCHEN AREA:** Located at the bottom left, measuring 4' 0" x 5' 0". It contains a sink (SINK), a stove (STOVE), and a refrigerator (REF.).
- Structural Notes:**
 - "4" x 8" GUD/CEAL THRU ROOF W/MP CAP. BRD (TYP OF 4)" indicates the roof structure.
 - "REF. LINES" are shown at the bottom left.



Technical drawing of a mechanical system, likely a damper or valve assembly, showing dimensions and labels.

Labels and Dimensions:

- CG 8"x2"**: Dimension for the top horizontal section.
- 150 CFM**: Flow rate specification.
- CG 6"x4"**: Dimension for the middle horizontal section.
- 50 CFM**: Flow rate specification.
- 10"x10"**: Dimension for the central square component.
- 7"**: Dimension for the vertical section on the right.
- 4 1/2"**: Dimension for the vertical section on the left.
- LIVING**: Label for the area on the left.
- DAMPER AS PER 1502 (TYPE 4)**: Label for the damper assembly.
- DUCT FROM ABOVE**: Label for the duct connection.

[illegible]

SCALE: 1/4"= 1'-0"

GROUND FLOOR PLAN - CORNER
TYP (UNITS "2", "3", "4", "5", "6")

SECOND FLOOR PLAN - CORNER